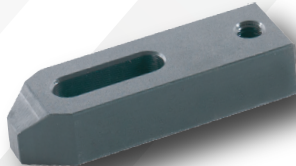
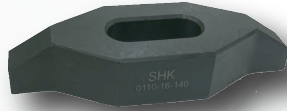
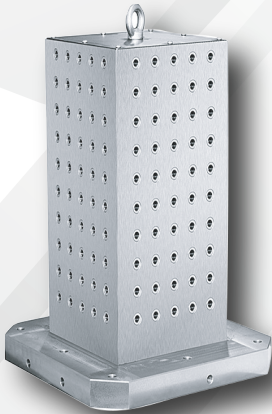


2024 Catalogue

SHK MAKİNA®

Bağlantı Ekipmanları..
"Connection equipments"



CE

Değerli Müştrilerimiz ;

SHK MAKİNA BAĞLANTI EKİPMANLARI SAN. TİC. LTD. ŞTİ. olarak 2022 yılında, sektörün farklı alanlarından bilgi ve tecrübelerini bir araya getiren kadrosu ile sizlere kaliteli ürünler sunmak ve koşulsuz müşteri memnuniyetini sağlamak için kurulmuş olup hedeflerini gerçekleştirebilmek amacıyla yılmadan ve üstün performans ile çalışmaktadır.

500 çeşitten fazla hazır stoklu ürünümüzü siz Sayın Müşterilerimize sunmaktayız .

Ürün çeşitliliğimizi arttırmak ve kalite kontrolümüzü sürekli hale getirmek için AR-GE ekibimiz özgüvenle çalışmaktadır.

Sektörde 20 yılı aşkın tecrübesi olan ekibimiz ile bağlantı ekipmanlarında kalite üretiyoruz.

ISO 9001 kalite belgesine uygun üretim yapmaktayız.

Saygılarımızla
SHK MAKİNA

Dear Customer

SHK MACHINERY CONNECTION EQUIPMENTS Ltd. Co. was established in Istanbul, in 2022. With our experienced staff, we provide superior workmanship and quality control to produce top quality products to ensure customer satisfaction.

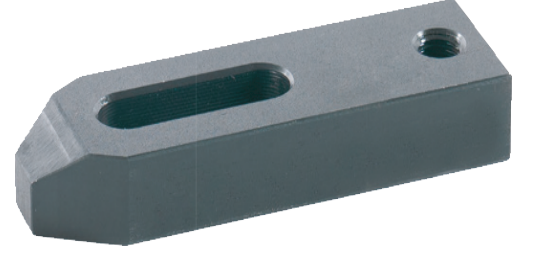
We offer more than 500 in- stock products to our customers. Our R&D team Works with devotion to ensure the high quality and the versatility of SHK Products

We produce quality connection equipments with our experienced team.

We produce in accordance with ISO 9001

Best Regards,
SHK MACHINA

Ürün kodu Nr.	L	metrik	d	a	a1	a2
0100-12100 0100-12125	100 125	M12-M14	M12	14,5	40	20
0100-16125 0100-16160	125 160	M16-M18	M16	18,5	50	25
0100-20160 0100-20200 0100-20250	160 200 250	M20-M22	M20	22,5	60 60 70	30 30 35
0100-24160 0100-24200 0100-24250 0100-24315	160 200 250 315	M24	M24	26,5	70 70 70 80	30 35 35 40

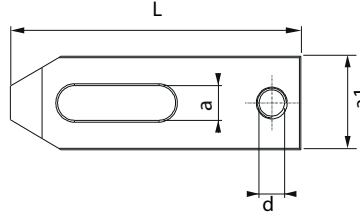


Ürün Nr. 0100 Destek Delikli Düz Pabuç

- Sertleştirilmiş
- Siyah oksit karartma

Product Nr. 0100 Straight Clamp with Support Hole

- Hardened
- Black oxide dimming



Ürün kodu	L	a	a1	a2
0120-12100 0120-12125	100 125	14,5	40	20
0120-16125 0120-16160	125 160	18,5	50	25
0120-20160 0120-20200 0120-20250	160 200 250	22,5	60 60 70	30 30 35
0120-24160 0120-24200 0120-24250 0120-24315	160 200 250 315	26,5	70 70 70 80	30 35 35 40

Düz Pabuç

Straight Clamp



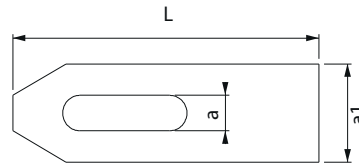
DIN 6314

Ürün Nr. 0120 Düz Pabuç

- Sertleştirilmiş
- Siyah oksit karartma

Product Nr 0120 Straight Clamp

- Hardened
- Black oxide dimming



Ürün Kodu Nr.	L	a	b	c	d	e
0110-16140	140	25	16	50	46	18,5
0110-20180	180	30	20	60	58	22,5

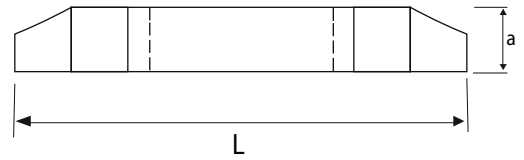
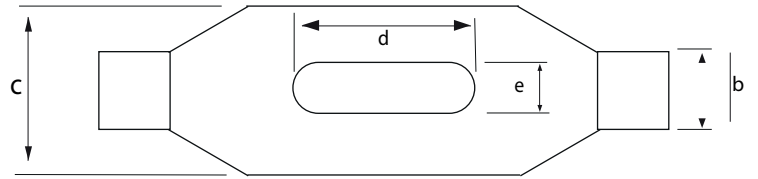


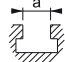
Ürün Nr. 0110 Çift Taraflı Sıkma Pabucu

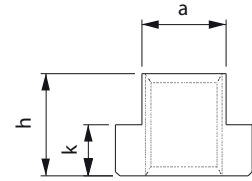
- Sertleştirilmiş
- Siyah oksit karartma

Product Nr. 0110 double sided crimping shoe

- Hardened
- Black oxide dimming



Ürün Kodu Nr.	dx 	a	e	l	h	k
0210-1012	M10x12	11.7	18	36	14	7
0210-1214	M12x14	13.7	22	44	16	8
0210-1416	M14x16	15.7	25	50	18	9
0210-1618	M16x18	17.7	28	56	20	10
0210-1820	M18x20	19.7	32	64	24	12
0210-2022	M20x22	21.7	35	70	28	14
0210-2224	M22x24	23.7	40	80	32	16
0210-2428	M24x28	27.7	44	88	36	18

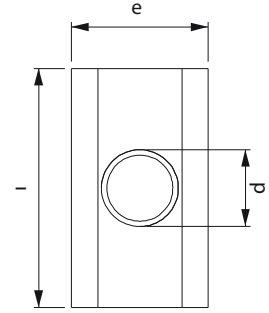


Ürün Nr. 0210 Uzun T-Pabuç

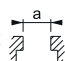
- Sertleştirilmiş
- Kalite 10

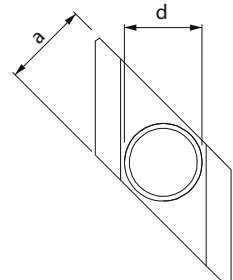
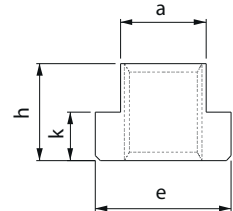
Product Nr. 0210 Long T-Nut

- Hardened
- Black oxide dimming
- Quality 10



Dereceli T-Pabuç

Ürün Kodu Nr.	dx 	a	e	h	k
0220-1012	M10x12	11.7	18	14	7
0220-1214	M12x14	13.7	22	16	8
0220-1416	M14x16	15.7	25	18	9
0220-1618	M16x18	17.7	28	20	10
0220-1820	M18x20	19.7	32	24	12
0220-2022	M20x22	21.7	35	28	14

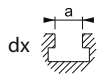


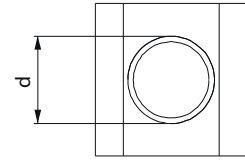
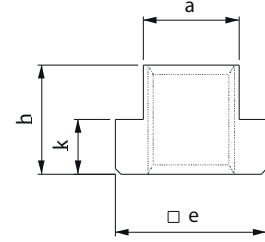
Ürün Nr. 0220 Dereceli T-Pabuç

- Sertleştirilmiş
- Siyah oksit karartma
- Kalite 10

Product Nr. 0220 Graded T-Nut

- Hardened
- Black oxide dimming
- Quality 10

Referans Nr.		a	e	h	k
0200-0810	M8x10	9.7	15	12	6
0200-0812 0200-1012	M8x12 M10x12	11.7	18	14	7
0200-0814 0200-1014 0200-1214	M8x14 M10x14 M12x14	13.7	22	16	8
0200-0816 0200-1016 0200-1216 0200-1416	M08x16 M10x16 M12x16 M14x16	15.7	25	18	9
0200-1018 0200-1218 0200-1418 0200-1618	M10x18 M12x18 M14x18 M16x18	17.7	28	20	10
0200-1620 0200-1820	M16x20 M18x20	19.7	32	24	12
0200-1622 0200-1822 0200-2022	M16x22 M18x22 M20x22	21.7	35	28	14
0200-1624 0200-2024 0200-2224	M16x24 M20x24 M22x24	23.7	40	32	16
0200-1628 0200-2028 0200-2228 0200-2428	M16x28 M20x28 M22x28 M24x28	27.7	44	36	18



DIN 508

Ürün Nr. 0200 T-Pabuç

- Sertleştirilmiş
- Siyah oksit karartma
- Kalite 10

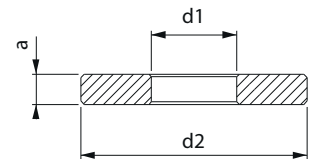
Product Nr. 0200 T-Nut

- Hardened
- Black oxide dimming
- Quality 10

Pul

Washer

Referans Nr.	metrik	d1	d2	a
0700-10	M10	10.5	28	4
0700-12	M12	13	35	5
0700-14	M14	15	40	5
0700-16	M16	17	45	6
0700-18	M18	19	45	6
0700-20	M20	21	50	6
0700-22	M22	23	50	8
0700-24	M24	25	60	8



DIN 6340

Ürün Nr. 0700 Pul

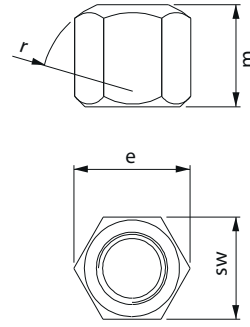
- Sertleştirilmiş
- Siyah oksit karartma

DIN 6340

Product Nr. 0700 Washer

- Hardened
- Black oxide dimming

Referans Nr.	metrik	sw	e	m	r
0550-10	M10	17	19.6	15	15
0550-12	M12	19	21.9	18	17
0550-14	M14	22	25.4	21	20
0550-16	M16	24	27.7	24	22
0550-18	M18	27	31.2	27	24
0550-20	M20	30	34.6	30	27
0550-22	M22	32	36.9	33	30
0550-24	M24	36	41.5	36	32



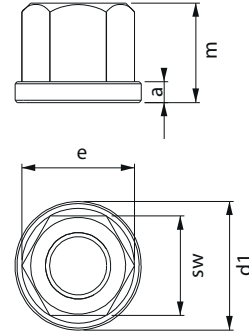
DIN 6330B Ürün Nr. 0550 Takviyeli Somun

Product Nr. 0550 Hexagon Nut

- Sertleştirilmiş
- Siyah oksit karartma
- Kalite 10

- Hardened
- Black oxide dimming
- Quality 10

Referans Nr.	metrik	sw	e	m	a	d1
0600-10	M10	17	19.2	15	4	22
0600-12	M12	19	21.5	18	4	25
0600-14	M14	22	24.9	21	4.5	28
0600-16	M16	24	27.2	24	5	31
0600-18	M18	27	30.6	27	5	34
0600-20	M20	30	34	30	6	37
0600-22	M22	32	36.3	33	6	40
0600-24	M24	36	40.8	36	6	45



Pullu Somun Nut with Washer



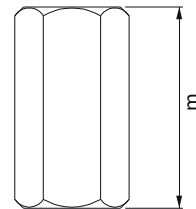
DIN 6331 Ürün Nr. 0600 Pullu Somun

Product Nr. 0600 Nut with Washer

- Sertleştirilmiş
- Siyah oksit karartma
- Kalite 10

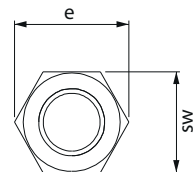
- Hardened
- Black oxide dimming
- Quality 10

Referans Nr.	metrik	sw	e	m
0650-10	M10	17	19.6	30
0650-12	M12	19	21.6	36
0650-14	M14	22	25.4	42
0650-16	M16	24	27.7	48
0650-18	M18	27	31.2	54
0650-20	M20	30	34.6	60
0650-22	M22	32	36.9	66
0650-24	M24	36	41.5	72



Uzatma Somun

Extension Nut



DIN 6334 Ürün Nr. 0650 Uzatma Somun

Product Nr. 0650 Extension Nut

- Sertleştirilmiş
- Siyah oksit karartma
- Kalite 10

- Hardened
- Black oxide dimming
- Quality 10

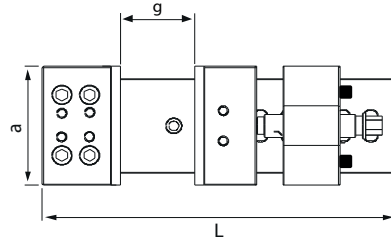
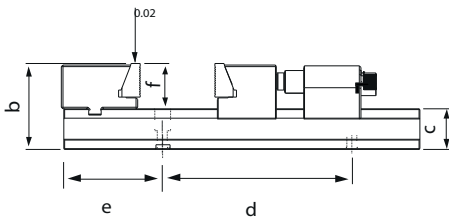
Referans Nr.	L	a	b	c	d	e	f	g	Sıkma Kuvveti Clamping Force kgf	Tork Değeri Allowable Screw Torque (N-m)
0050-196300	566	196	115	55	250	150	60	300	4400	175
0050-196400	666	196	115	55	350	150	60	400	4400	175

Ürün Nr. 0050 Mekanik Çelik Mengene

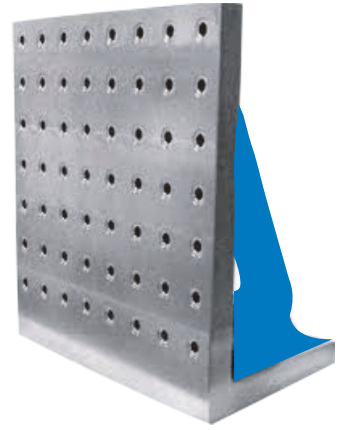
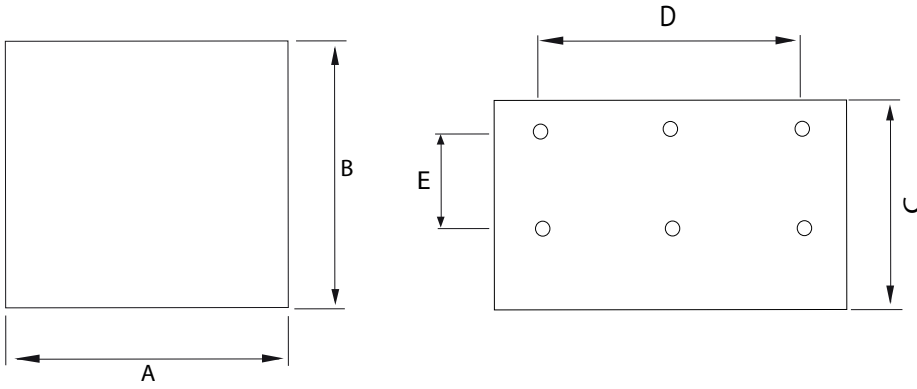
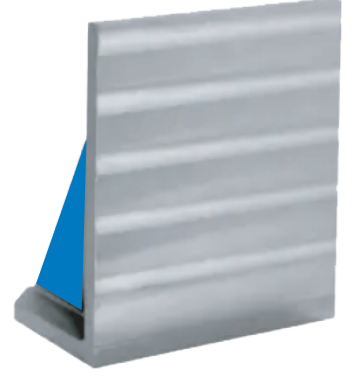
- Mekanik çelik mengene sertleştirilmiş taşlanmıştır.
- Çift kamalı sabitleme sistemi ile hızlı mesafe ayarlanır ve esnemeyi minimuma indirir.
- Yaylı çeneler sayesinde iş parçasını mengene yüzeyine doğru çeker ve daha güvenli işleme sağlar.

Product Nr. 0050 Mechanical Steel Vice

- Mechanical steel vise is hardened and ground.
- The double wedge fixing system adjusts the distance quickly and minimizes stretching.
- Thanks to the spring-loaded jaws, it pulls the workpiece towards the vice surface and provides safer processing.



Referans Nr.	A	B	C	D	E
1150-300	300	300	230	250	100
1150-400	400	400	230	320	160
1150-500	500	500	350	400	200
1150-630	630	630	440	500	250

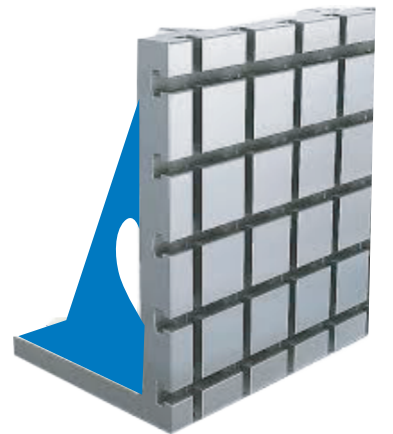


L Gönyelerimiz

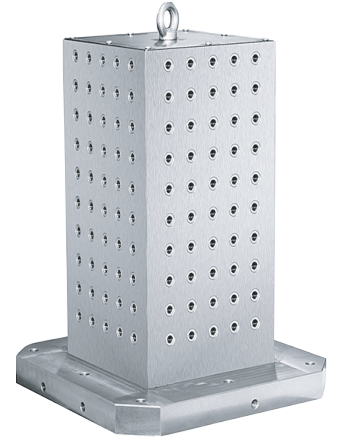
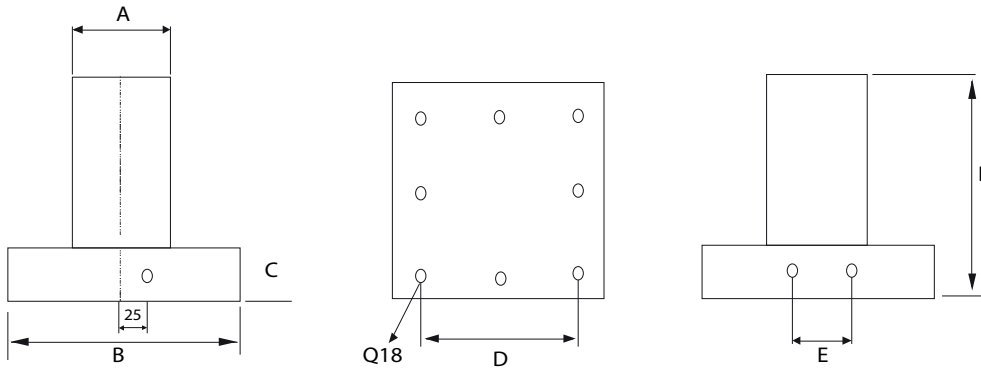
- Standart bağlama ekipmanlarına uygundur.
- Deliksiz Düz
- Gövdeye Dişli M12-M16
- Çelik burçlu Q12-Q16
- Kanallı 14 -18 olarak üretilmektedir
- Malzeme = Döküm

Our L Miters

- It is suitable for standard fastening equipment.
- Plain Without Holes
- Threaded to Body M12-M16
- Q12-Q16 with steel bush
- It is produced in 14 -18 channels.
- Material = Casting



Referans Nr.	A	B	C	D	E	F
0900-400150	150	400	50	320	110	500
0900-500200	200	500	50	400	150	600
0900-630250	250	630	50	500	200	700



Kulelerimiz

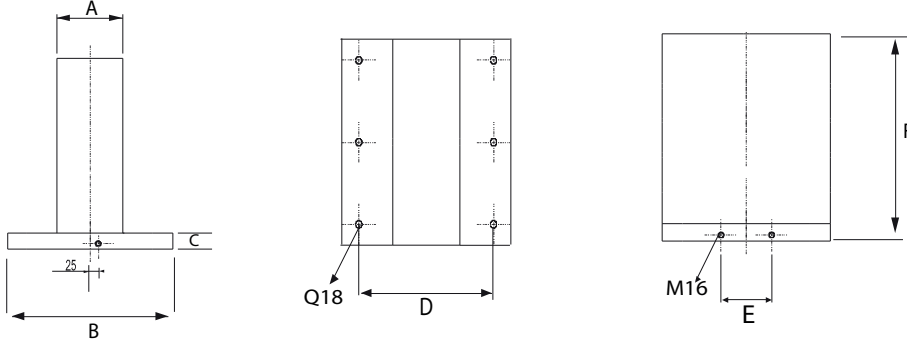
- Deliksiz düz
- Gövdeye dişli M12-M16
- Çelik burçlu Q12-Q16 olarak üretilmektedir.
- İsteğe bağlı özel üretim yapılmaktadır.
- Malzeme = Döküm

Our towers

- Threaded to body M12-M16
- Straight without hole M12-M16
- It is produced as Q12-Q16 with steel bush.
- Special production is available upon request.
- Material = Casting

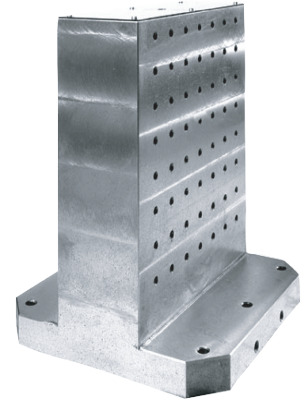


Referans Nr.	A	B	C	D	E	F
0900-400150	150	400	50	320	110	500
0900-500200	200	500	50	400	150	600
0900-630250	250	630	50	500	200	700



Kulelerimiz

- Deliksiz düz
- Gövdeye dişli M12-M16
- Çelik burçlu Q12-Q16 olarak üretilmektedir.
- isteğe bağlı özel üretim yapılmaktadır.
- Malzeme = Döküm

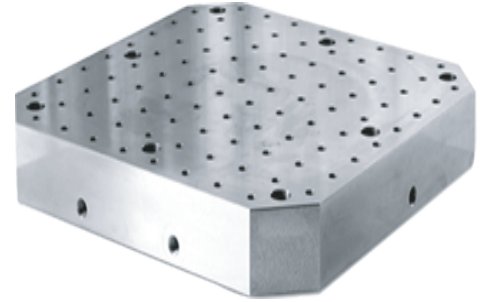
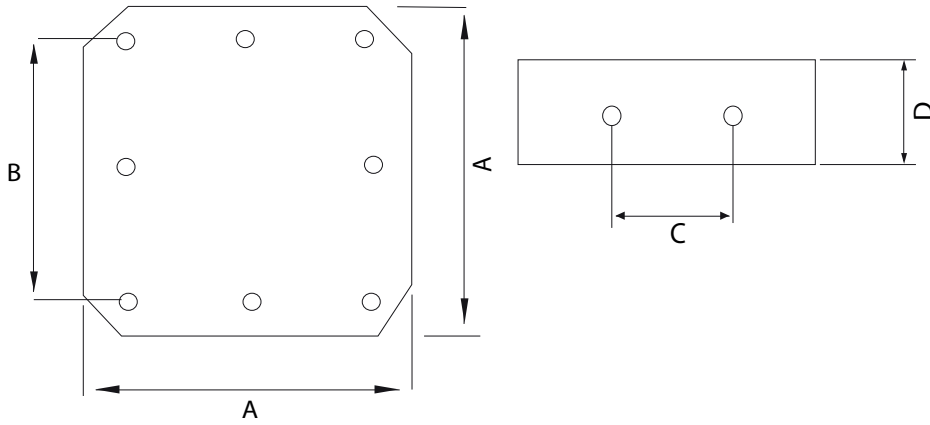


Our towers

- Threaded to body M12-M16
- Straight without hole M12-M16
- It is produced as Q12-Q16 with steel bush.
- Special production is available upon request.
- Material = Casting



Referans Nr.	A	B	C	D
1050-400150	400	320	110	75
1050-500200	500	400	150	75
1050-630250	530	500	200	75



Tablolarımız

- Hassas Taşlanmıştır
- Deliksiz Düz
- Gövdeye Dişli M12-M16
- Çelik burçlu Q12-Q16
- Kanallı 14 -18 olarak üretilmektedir

Our tables

- Precision Ground
- Plain Without Holes
- Threaded to Body M12-M16
- Q12-Q16 with steel bush
- It is produced in 14 -18 channels.

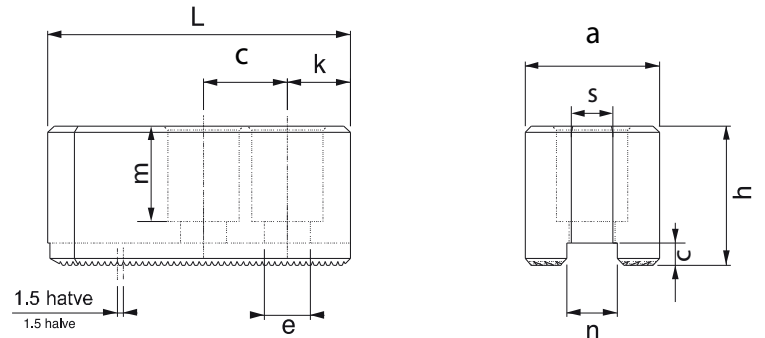
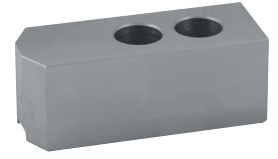
Referans Nr.	inch	hatve halve	L	a	h	n t7	c	k	c	e	m	s
0800-0612	6" inch	1.5x60	72	32	32	12	5	15	20	11	22	10
0800-0814	8" inch	1.5x60	98	37	37	14	5	24	25	13	22	14
0800-1016	10" inch	1.5x60	110	42	42	16	5	30	30	13	29	14
0800-1218	12" inch	1.5x60	130	50	52	18	5	39	30	15	32	17
0800-1221	12" inch	1.5x60	130	50	52	21	5	39	30	17	32	19
0810-0612	6" inch	1.5x60	72	28	37	12	5	15	20	11	17	10
0810-0814	8" inch	1.5x60	95	35	67	14	5	24	25	13	19	14
0810-1016	10" inch	1.5x60	110	38	77	16	5	30	30	13	19	14
0810-1218	12" inch	1.5x60	130	48	77	18	5	39	30	15	23	17
0810-1221	12" inch	1.5x60	130	48	77	21	5	39	30	17	23	19

Ürün Nr. 0800 - 0810 CNC Torna Yumuşak Ayak

- 6" - 8" - 10" - 12" inch aynalar için

Product Nr. 0800 - 0810 CNC Lathe Chuck Soft Podous

- For chucks of 6" - 8" - 10" and 12"



CNC Torna Yumuşak Ayak T-Pabucu

CNC Lathe Chuck Soft Podous T-Nut

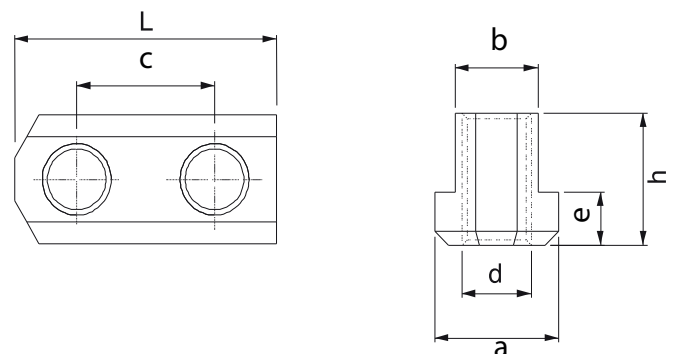
Referans Nr.	inch	L	h	b T6	a	e	d	c
0230-0610	6" inch	38	18.5	12	18	7.5	M10	20
0230-0812	8" inch	45	21.5	14	21	8.5	M12	25
0230-1012	10" inch	52	21.5	16	22	8.5	M12	30
0230-1214	12" inch	55	33.5	18	26.5	13.5	M14	30
0230-1216	12" inch	55	27	21	29	13.5	M16	30

Ürün Nr. 0230 CNC Torna Yumuşak Ayak T-Pabucu

- 6" - 8" - 10" - 12" inch aynalar için
- Sertleştirilmiş
- Siyah oksit karartma

Product Nr. 0230 CNC Lathe Chuck Soft Podous T-Nut

- For chucks of 6" - 8" - 10" and 12"
- Hardened
- Black oxide dimming



Referans Nr.	d x L	a1	a	Sıkma Verileri Tightening Data	
				Nm	kN
0500-10050 0500-10063 0500-10080 0500-10100 0500-10125 0500-10160 0500-10200	M10 x50 x65 x80 x100 x130 x165 x200	13	25 32 50 63 75 100 125	65	26
0500-12050 0500-12065 0500-12080 0500-12100 0500-12130 0500-12165 0500-12200	M12 x50 x65 x80 x100 x130 x165 x200	15	25 32 50 63 75 100 125	120	65
0500-14063 0500-14080 0500-14100 0500-14130 0500-14165 0500-14200 0500-14250	M14 x65 x80 x100 x130 x165 x200 x250	17	32 50 63 75 100 125 160	190	85
0500-16065 0500-16080 0500-16100 0500-16130 0500-16165 0500-16200 0500-16250 0500-16320 0500-16400	M16 x65 x80 x100 x130 x165 x200 x250 x320 x400	19	32 50 63 75 100 125 160 180 315	300	117
0500-18080 0500-18100 0500-18130 0500-18165 0500-18200 0500-18250 0500-18320	M18 x80 x100 x130 x165 x200 x250 x320	23	50 60 75 100 125 150 180	405	142
0500-20080 0500-20100 0500-20130 0500-20165 0500-20200 0500-20250 0500-20320 0500-20400 0500-20500	M20 x80 x100 x130 x165 x200 x250 x320 x400 x500	27	32 60 70 100 125 160 200 250 315	570	182
0500-22100 0500-22130 0500-22165 0500-22200 0500-22250 0500-22320 0500-22400	M22 x100 x130 x165 x200 x250 x320 x400	31	45 70 100 125 160 180 250	770	226
0500-24100 0500-24130 0500-24165 0500-24200 0500-24250 0500-24320 0500-24400 0500-24500 0500-24630	M24 x100 x130 x165 x200 x250 x320 x400 x500 x630	35	45 70 100 125 160 200 250 315 315	980	260

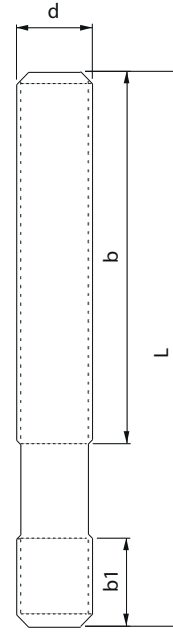
DIN 6379

Ürün nr. 0500 Düz Saplama

- Kalite 10.9
- Siyah oksit karartma

Product Nr. 0500 Straight Stud

- Quality 10.9
- Black oxide dimming



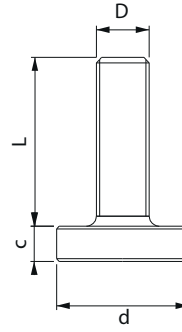
Not: 150 °C üzerindeki ortamlarda sıkma işlemi yapılırken dişlerin üzerine Loctite 8150 kullanılır.

Note: Environments on the 150 °C when clamping action on the thread Loctite 8150 is used.



Loctite
8150

Referans Nr.	D x L	d	c
0400-1261	M12x61	34	11
0400-12101	M12x101	34	11
0400-1689	M16x89	46	14
0400-16129	M16x129	46	14
0400-2089	M20x89	49	14
0400-20129	M20x129	49	14
0400-2489	M24x89	49	14
0400-24129	M24x129	49	14



Ürün Nr. 0400 Pabuç Destek Civatası

- Siyah oksit karartma

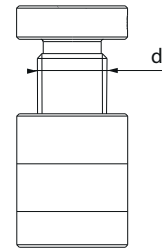
Product Nr. 0400 Clamp Support Bolt

- Black oxide dimming

Trapez Diş Yükseltici Destek

Trapeze Thread Lifter Support

Referans Nr.	L	d	
0300-023030	23-30	M16	34
0300-040060	40-60	M16	34
0300-050070	50-70	Tr 30x4	49
0300-070100	70-100	Tr 30x4	49
0300-100140	100-140	Tr 30x4	49
0300-140220	140-220	Tr 30x4	56
0300-210325	210-325	Tr 36x6	66
0300-260425	260-425	Tr 36x6	66



Ürün Nr. 0300 Trapez Diş Yükseltici Destek

- Nr.0300 yükselticiler DIN 6314-6315-6316 pabuçlarda yükseltici destek amaçlı kullanılır.
- Siyah oksit karartma

Product Nr. 0300 Trapeze Thread Lifter Support

- Nr.0300 Lifters are used in DIN 6314-6315-6316 clamps as the lifter support
- Black oxide dimming

SHK MAKİNA®

SHK İŞ PARÇALARI VE KALP BAĞLANTI EKİPMANLARI SANAYİ TİCARET LTD.ŞTİ.

Çerkeşli OSB Mah.İmes 17. Cad. D7 Blok No: 8/2 Dilovası / KOCAELİ

info@shkmakina.com shkmakina@gmail.com

+0535 915 08 57 +0535 731 51 11 +0532 370 89 88